

REVISION HISTORY			
REV	DATE	BY	DESCRIPTION
J	17NOV2017	VK/YGC	PRN: P2017-2827

PART NUMBER

AC-C- - - - -

ACTUATOR FITTING TYPE
(SEE SHEET 4)

LATCH FITTING TYPE
(SEE SHEET 4)

SEE NOTE E WHEN SELECTING
CABLES WITH ONE FITTING

CABLE EXTENSION (mm) "T" = TA+TLC+TF*
*(LATCH END ONLY)
3 DIGITS(Example: 55mm = 055)
(OMIT FOR CABLE OPTION 1 & 2)
(SEE NOTE D)

CABLE LENGTH (mm) "L"
4 DIGITS (Example: 250mm = 0250)

CABLE AND CONDUIT OPTION	
1	BARE CABLE
2	COATED CABLE
3	JACKETED CABLE WITH CONICAL END COUPLINGS
4	JACKETED CABLE WITH THREADED AND SNAP RING RETAINERS
5	JACKETED CABLE WITH CONICAL END COUPLING AND SNAP RING RETAINER
6	JACKETED CABLE WITH SNUB END COUPLING AND THREADED RETAINER
7	JACKETED CABLE WITH SNUB AND CONICAL END COUPLING

SPRING OPTION
(LATCH FITTING END ONLY)
0 = WITHOUT SPRING(FOR ALL CABLE TYPES)
1 = WITH SPRING (FOR 3, 6 & 7 CABLE TYPES ONLY)
NOTE: TLC MUST BE 28mm WHEN SPRING IS USED

BARE CABLES (1)

ACTUATOR END (FITTING A SHOWN) (P/N AC-CAB0-1-LLLL SHOWN) LATCH END (FITTING B SHOWN)

FOR CABLES WITH ONE FITTING ONLY
SEE NOTE E

"L" ±1.5 (UP TO 610)
±2.3 (611 TO 1220)
±3.2 (1221 TO 2540)
±4 (OVER 2540)

COATED CABLES (2)

ACTUATOR END (FITTING A SHOWN) (P/N AC-CAB0-2-LLLL SHOWN) LATCH END (FITTING B SHOWN)

FOR CABLES WITH ONE FITTING ONLY
SEE NOTE E

"L" ±1.5 (UP TO 610)
±2.3 (611 TO 1220)
±3.2 (1221 TO 2540)
±4 (OVER 2540)

JACKETED CABLES WITH CONICAL END COUPLINGS (3)

(P/N AC-CBB0-3-LLLL-TTT SHOWN)

ACTUATOR END (FITTING B SHOWN) LATCH END (FITTING B SHOWN)

TA "K" (SEE NOTE C)
+6/-0 (UP TO 1220)
+10/-0 (1221 TO 2540)
+14/-0 (OVER 2540)

TLC TF

"L" (mm) REF

"T" = TA+TLC+TF(LATCH END ONLY)
±1.5 ("L" UP TO 2540)
±2.3 ("L" OVER 2540)
SEE NOTE D

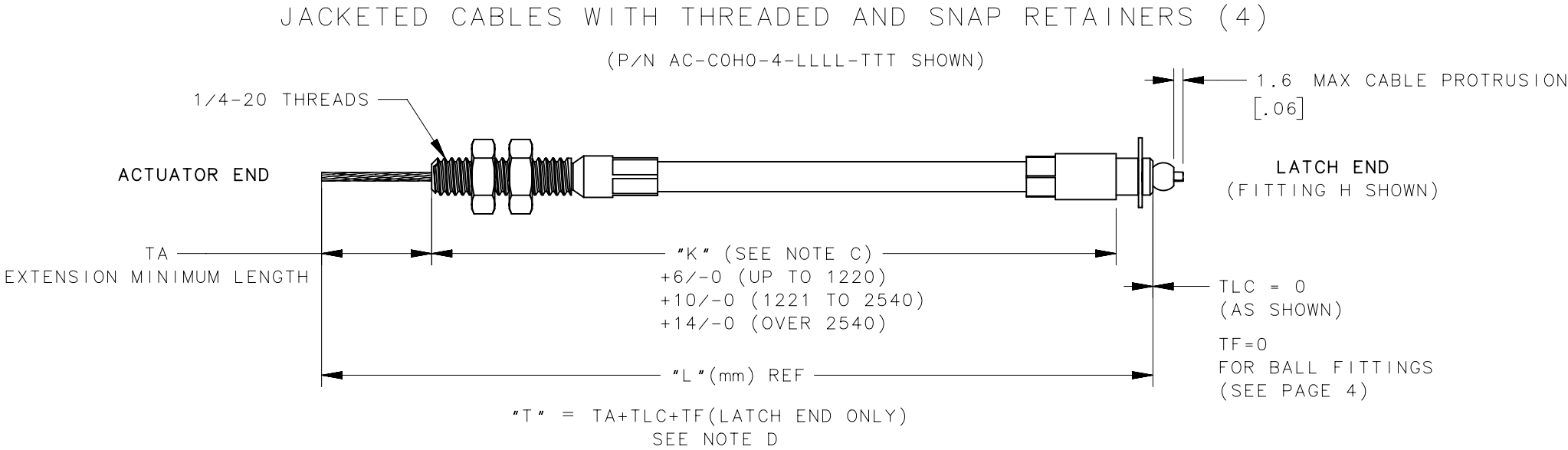
CONDUIT TYPE	"K" DIMENSION	MIN "K"
TYPE 3	L-T-17.2mm	52mm

NOTES:

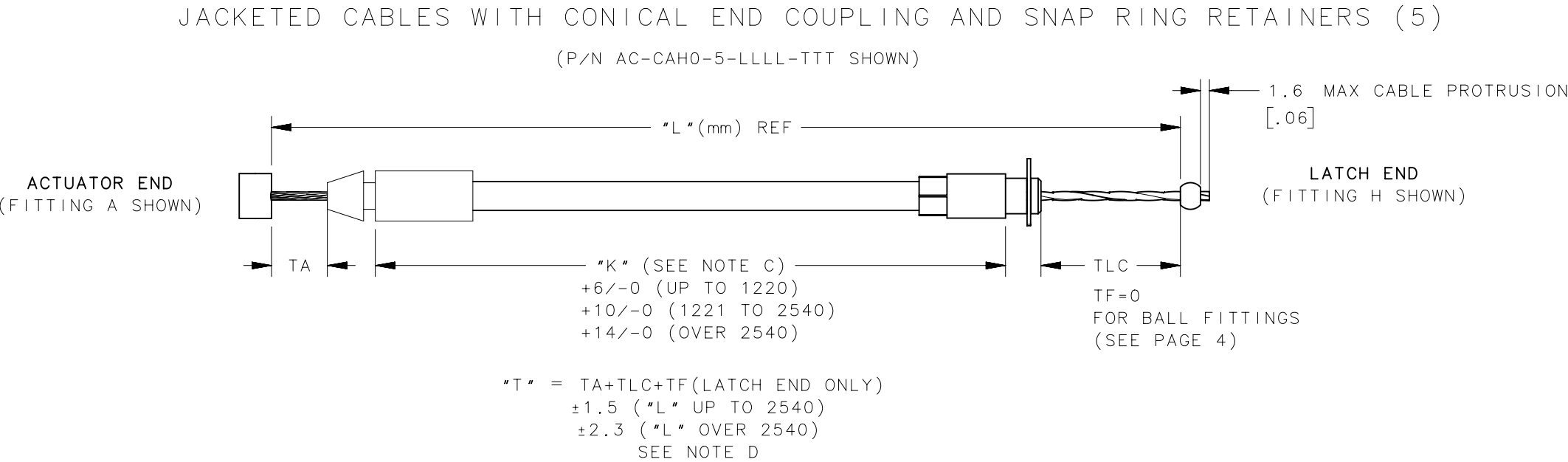
- A. FITTINGS ON CABLES SHOWN FOR REFERENCE ONLY. FITTINGS DEPENDENT ON ACTUATOR AND LATCH SELECTED.
- B. DATUM POINTS TO DEFINE LENGTH FOR SPECIFIC FITTINGS SHOWN ON SHEET 4.
- C. "K" IS A DERIVED DIMENSION BASED ON CABLE EXTENSION AND CONDUIT TYPE.
- D. "T" DIMENSION = TA+TLC+TF(LATCH END ONLY), WHERE:
TA = BARE CABLE LENGTH BETWEEN ACTUATOR END FITTING AND CONDUIT(SEE ACTUATOR J DRAWING).
TLC = BARE CABLE LENGTH BETWEEN CONDUIT AND LATCH END FITTING.
TF = LATCH END FITTING VALUE FROM PAGE 4. CONTACT SOUTHCO FOR "T" DIMENSION OF OTHER FITTING COMBINATIONS.
- E. WHEN CABLE WITH ONLY ONE FITTING IS SELECTED, "L" DIMENSION IS FROM FITTING DATUM LINE TO END OF CABLE. REPLACE OMITTED FITTING TYPE WITH "0", (example: AC-CA00-7-LLLL-TTT).

THIRD ANGLE PROJECTION	MILLIMETERS [IN]		DESCRIPTION	
	TOLERANCES UNLESS OTHERWISE NOTED		AC CABLE ASSEMBLY	
	ALL DIMENSIONS WITHOUT TOLERANCES ARE FOR REFERENCE ONLY.		J-AC-C	
PROPRIETARY ITEM EXCEPT FOR USES EXPRESSLY GRANTED IN WRITING, INFORMATION DISCLOSED HEREON IS CONFIDENTIAL AND ALL RIGHTS, PATENT AND OTHERWISE, ARE RESERVED BY SOUTHCO, INC.	SIZE A3	SYSTEM NX	DWG NO. J-AC-C	
	PER ASME Y14.5M-1994	DRAWN BY ACH/MJS	DATE 15JUL2008	SCALE 1:1
		SHEET 1 OF 4		

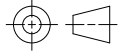
REVISION HISTORY			
REV	DATE	BY	DESCRIPTION
J	17NOV2017	VK/YGC	PRN: P2017-2827



CONDUIT TYPE	"K" DIMENSION	MIN "K"
TYPE 4	L-T-6.4mm	82mm

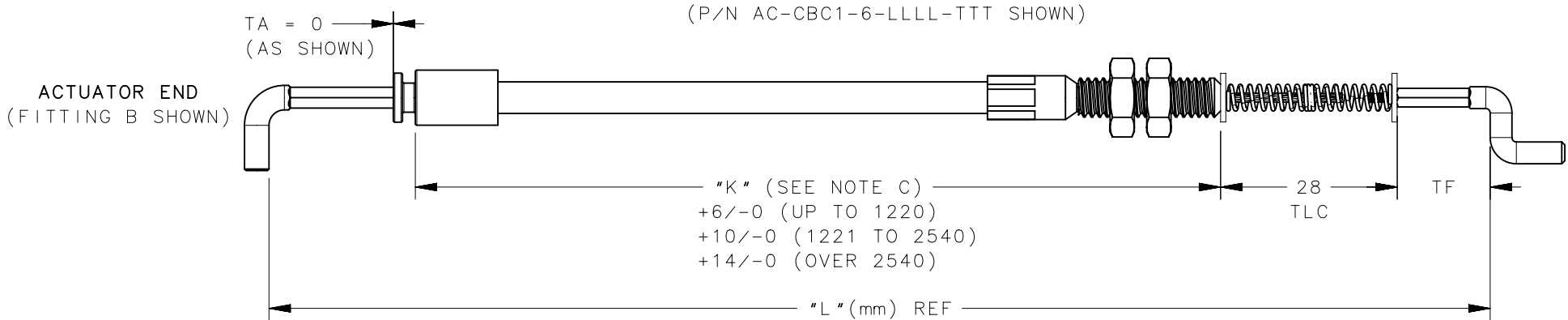


CONDUIT TYPE	"K" DIMENSION	MIN "K"
TYPE 5	L-T-15mm	62mm

THIRD ANGLE PROJECTION 	southco® CONNECT • CREATE • INNOVATE		
	MILLIMETERS [IN]		
	TOLERANCES UNLESS OTHERWISE NOTED		
	ALL DIMENSIONS WITHOUT TOLERANCES ARE FOR REFERENCE ONLY.		
PROPRIETARY ITEM EXCEPT FOR USES EXPRESSLY GRANTED IN WRITING, INFORMATION DISCLOSED HEREON IS CONFIDENTIAL AND ALL RIGHTS, PATENT AND OTHERWISE, ARE RESERVED BY SOUTHCO, INC.	SIZE A3	SYSTEM NX	DWG NO. J-AC-C
	PER ASME Y14.5M-1994	DRAWN BY ACH/MJS	DATE 15JUL2008
		SCALE 1:1	SHEET 2 OF 4

REVISION HISTORY			
REV	DATE	BY	DESCRIPTION
J	17NOV2017	VK/YGC	PRN: P2017-2827

JACKETED CABLES WITH SNUB END COUPLING AND THREADED RETAINER(6)

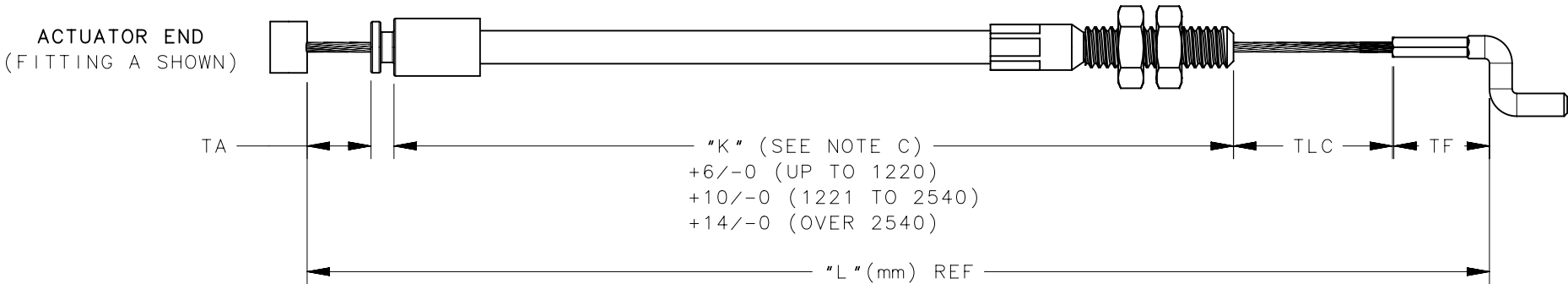


LATCH END
(FITTING C SHOWN)

"T" = TA+TLC+TF(LATCH END ONLY)
±1.5 ("L" UP TO 2540)
±2.3 ("L" OVER 2540)
SEE NOTE D

CONDUIT TYPE	"K" DIMENSION	MIN "K"
TYPE 6	L-T-3.6mm	82mm

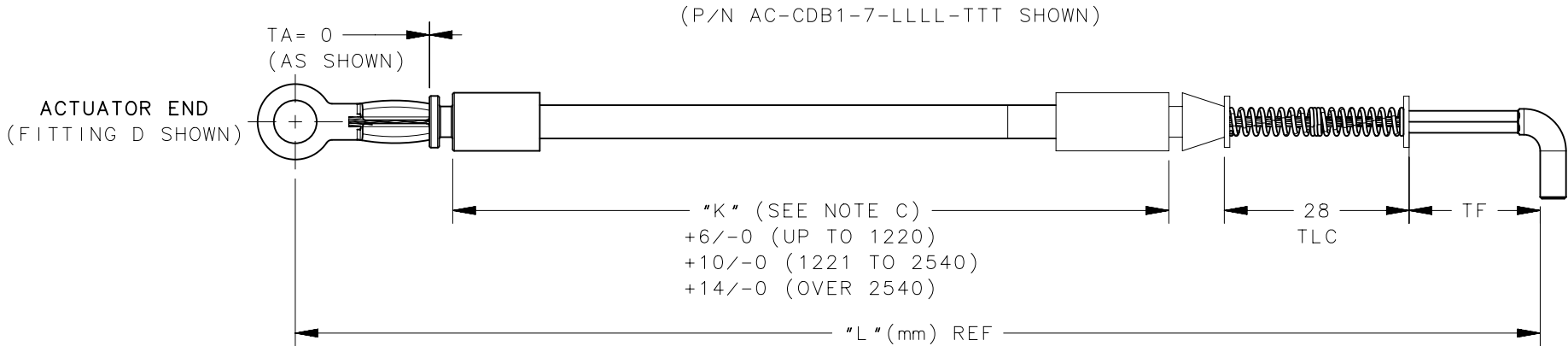
(P/N AC-CAC0-6-LLLL-TTT SHOWN)



LATCH END
(FITTING C SHOWN)

"T" = TA+TLC+TF(LATCH END ONLY)
±1.5 ("L" UP TO 2540)
±2.3 ("L" OVER 2540)
SEE NOTE D

JACKETED CABLES WITH SNUB AND CONICAL END COUPLINGS (7)



LATCH END
(FITTING B SHOWN)

"T" = TA+TLC+TF(LATCH END ONLY)
±1.5 ("L" UP TO 2540)
±2.3 ("L" OVER 2540)
SEE NOTE D

CONDUIT TYPE	"K" DIMENSION	MIN "K"
TYPE 7	L-T-12.2mm	52mm

THIRD ANGLE
PROJECTION

MILLIMETERS [IN]

TOLERANCES UNLESS OTHERWISE NOTED

ALL DIMENSIONS WITHOUT
TOLERANCES ARE FOR
REFERENCE ONLY.

PER ASME Y14.5M-1994

PROPRIETARY ITEM
EXCEPT FOR USES EXPRESSLY GRANTED
IN WRITING, INFORMATION DISCLOSED
HEREON IS CONFIDENTIAL AND ALL
RIGHTS, PATENT AND OTHERWISE,
ARE RESERVED BY SOUTHCO, INC.

southco[®]
CONNECT • CREATE • INNOVATE

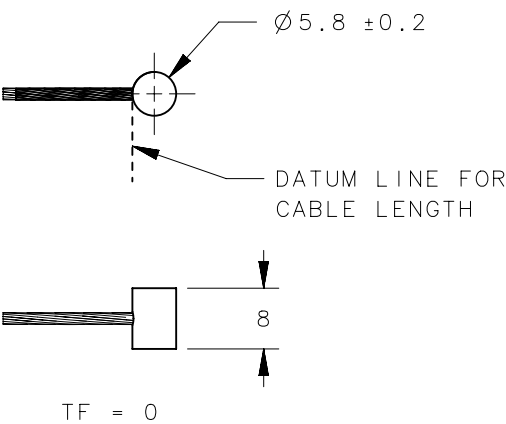
AC CABLE ASSEMBLY

SIZE A3 SYSTEM NX DWG NO. J-AC-C

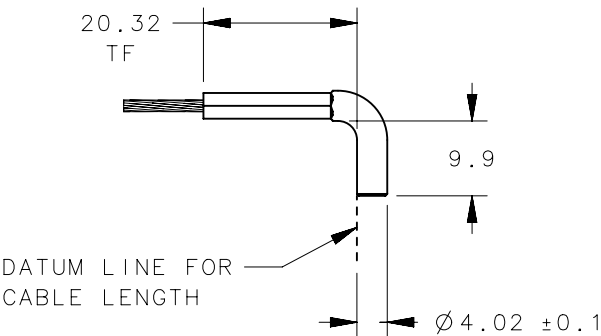
DRAWN BY ACH/MJS DATE 15JUL2008 SCALE 1:1 SHEET 3 OF 4

REVISION HISTORY			
REV	DATE	BY	DESCRIPTION
J	17NOV2017	VK/YGC	PRN: P2017-2827

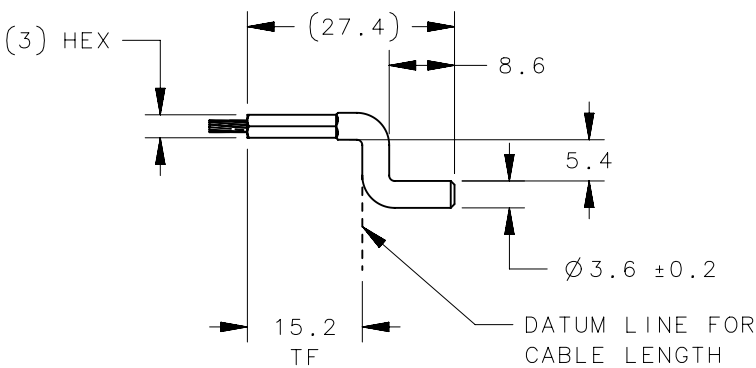
FITTING A (BARREL FITTING) DIE CAST ZINC
FITTING J (BARREL FITTING) STAINLESS STEEL



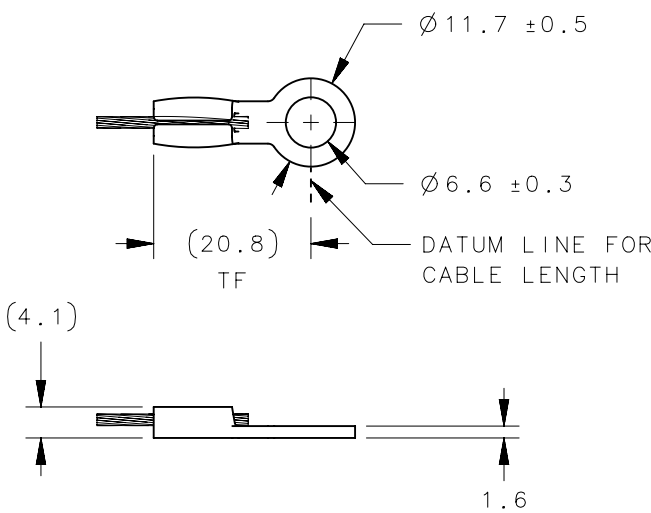
FITTING B (L FITTING) STEEL
FITTING K (L FITTING) STAINLESS STEEL



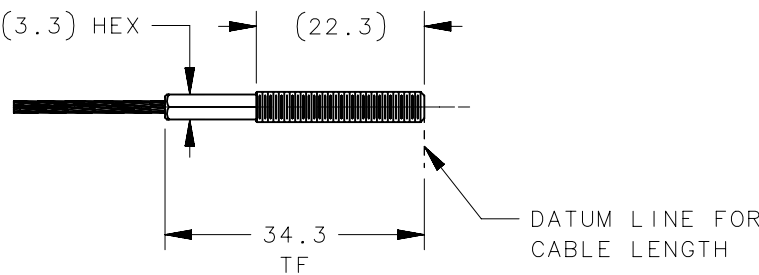
FITTING C (Z FITTING) STEEL



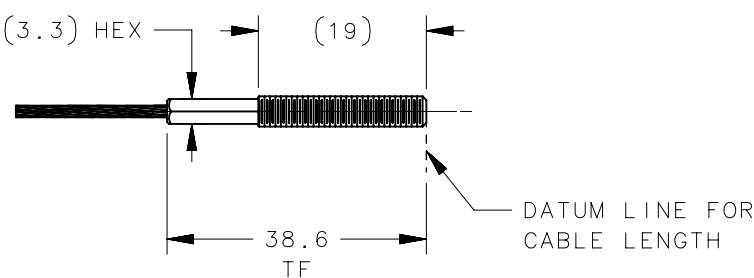
FITTING D (EYELET FITTING) STAINLESS STEEL



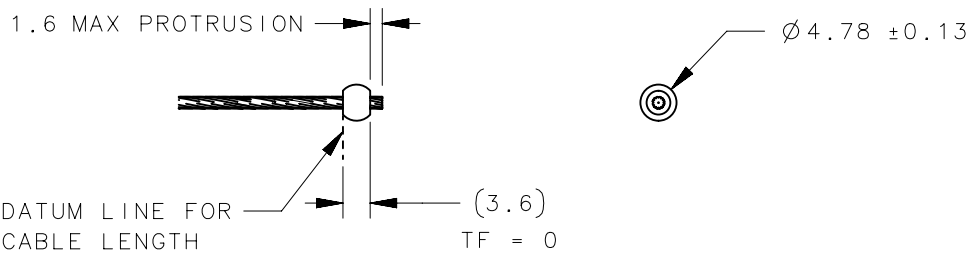
FITTING E (THREADED FITTING) STEEL
M4 THREAD



FITTING F (THREADED FITTING) STEEL
8-32 THREAD



FITTING H (BALL FITTING) STAINLESS STEEL



-	END COUPLING	NYLON	BLACK
-	SPRING	STAINLESS STEEL	NATURAL
-	JACKET	POLYPROPYLENE	BLACK
-	LINER	ACETAL	WHITE
-	CABLE	STAINLESS STEEL	NATURAL
-	WASHER(2)	STAINLESS STEEL	NATURAL
K	L FITTING	300 SERIES STAINLESS STEEL	NATURAL
J	BARREL FITTING	300 SERIES STAINLESS STEEL	NATURAL
H	BALL FITTING	300 SERIES STAINLESS STEEL	NATURAL
F	THREADED TERMINAL 8-32	STEEL	ZINC PLATED
E	THREADED TERMINAL M4	STEEL	ZINC PLATED
D	EYELET FITTING	300 SERIES STAINLESS STEEL	NATURAL
C	Z FITTING	STEEL	ZINC PLATED
B	L FITTING	STEEL	ZINC PLATED
A	BARREL FITTING	ZAMAK 5	NATURAL
FITTING VARIABLE	TYPE OF COMPONENT	MATERIAL	FINISH

THIRD ANGLE PROJECTION	southco [®] CONNECT • CREATE • INNOVATE		
MILLIMETERS [IN]			
SURFACE AREA	TOLERANCES UNLESS OTHERWISE NOTED		
VOLUME			
PROPRIETARY ITEM	ALL DIMENSIONS WITHOUT TOLERANCES ARE FOR REFERENCE ONLY.		
EXCEPT FOR USES EXPRESSLY GRANTED IN WRITING, INFORMATION DISCLOSED HEREON IS CONFIDENTIAL AND ALL RIGHTS, PATENT AND OTHERWISE, ARE RESERVED BY SOUTHCO, INC.			
PER ASME Y14.5M-1994	SIZE A3	SYSTEM NX	DWG NO. J-AC-C
	DRAWN BY ACH/MJS	DATE 15JUL2008	SCALE 1:1
			SHEET 4 OF 4